

## CT TERMINAL BOX

### MODELS : SM2-XL

#### 1.0 GENERAL FEATURES

- Die cast and aluminium body & cover. Therefore the assembly is rust proof, compact, lightweight and easy to handle.
- Very easy to install with 8 equispaced holes for fixing bolts.
- Combination of 27, 37, 45 & 53 terminals are available using same enclosure.
- Replacement of any terminal is possible.
- For fixing cable gland of external circuit 4 exits of M50 are provided.
- The terminals allow the connection between wiring inside and outside the transformer tank and are designed in such a way to avoid unscrew during assembly or wiring operation allow an easy connection between external and internal measuring circuit of transformer tank.
- Protection: Withstand IP-65.
- Suitable for outdoor application.
- Working Temperature: Standard -10° to +115°C. On request -40° to +120°C can be provided.

#### 2.0 APPLICATION

SM2-XL Terminal Box is very useful for connecting internal circuits with external circuits in oil filled transformer.

#### 3.0 CONSTRUCTION

An aluminium base is used for housing terminals. The Base has 8 holes of Ø18 mm for mounting on Ø270 PCD.

An O-Ring is provided with suitable groove in the base to make the installation leak proof. Terminals are provided in combination of 27, 37, 45 & 53

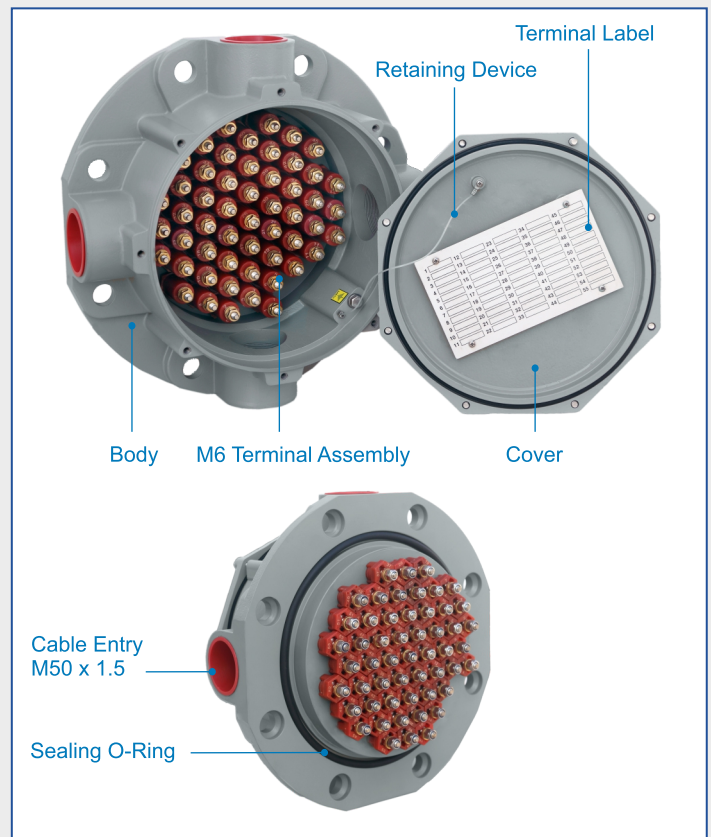
Each terminal is provided with Cap to restrict the axial movement of Terminal. It is possible to replace any Terminal. Thus any housing can be used by just replacing faulty Terminal. An Aluminium Cover is provided for the main Body. The Cover is provided with O-Ring for making it leak proof. A nylon lid links cover and housing to avoid any mistake during wiring operation.

#### 4.0 FAULTS & REMEDIES

For any fault, other than replacement of Terminal, the Terminal Box should be returned to Sukrut Electric Co. Pvt. Ltd. for repairs.

#### 5.0 ROUTINE TEST

- Leakage Test : At 2.5 kg/cm<sup>2</sup> for 1 min for body before assembly & At 2.5 kg/cm<sup>2</sup> for 1 min Terminal Box after assembly.
- Dielectric Test : At 2 kV for 1 minute between terminal to terminal and terminal and body.
- Visual Inspection: 100% visual inspection is done before and after assembly.



#### 6.0 TEST TYPE

Tests conducted at IDEMI, Mumbai.

- IP-65 Ingress Protection.
- Die-Electric test at 5 kV AC for 1 min.
- Insulation resistance test at 1 kV DC for 1 min.
- Breakdown strength test at high voltage AC 50Hz RMS.

Tests Conducted at ARAI, Pune.

- Current carrying capacity.
- Sympathetic Vibration test.
- Corrosion Resistance C4-M

#### 7.0 HOW TO ORDER

Select suitable model according to number of terminals & Exits. Eg: SM2-XL with 53 terminals & 4 exits.

No. of Terminals	No. of Exits
27	4 Exits of M50
37	
45	
53	

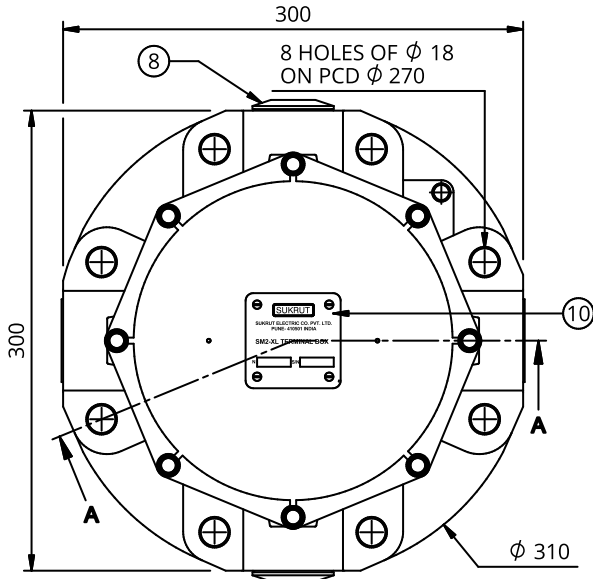
#### NOTES:

- Standard number of exits are 4.
- Special requirement can be fulfilled on demand.

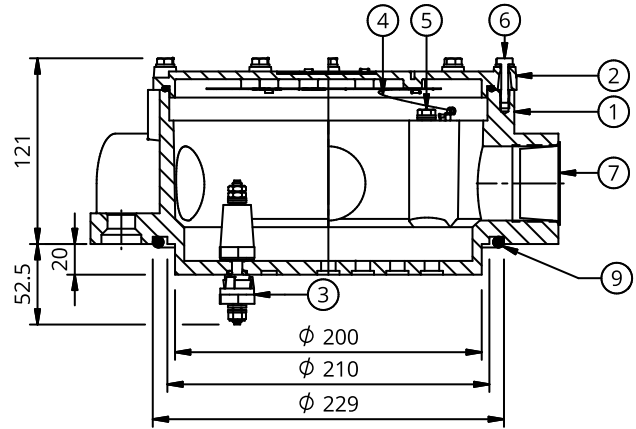


# CT TERMINAL BOX MODEL: SM2-XL

**FIG 1. : CT TERMINAL BOX: SM2-XL**

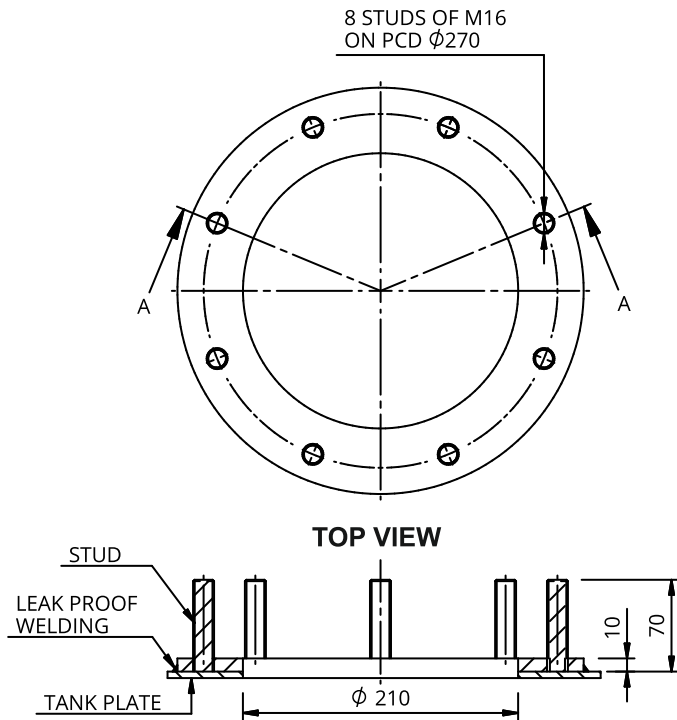


**TOP VIEW**



**SECTION A-A**

**FIG 2. : MOUNTING PAD**

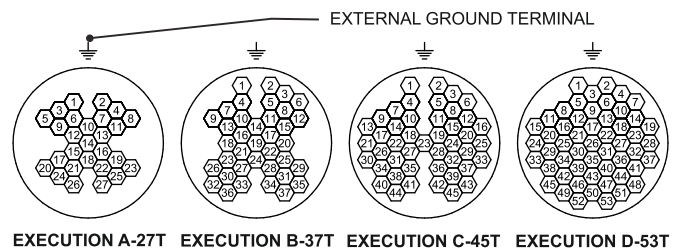


**SECTION A-A**

**PART LIST FOR FIG. 1**

S/N	DESCRIPTION	MATERIAL	QTY
1.	BODY SM2-XL	ALUMINIUM	1
2.	COVER SM2-XL	ALUMINIUM	1
3.	M6 TERMINAL	—	—
4.	RETAINING DEVICE	—	1
5.	GROUND TERMINAL	S.S 316	2
6.	COVER ASSEMBLY SCREW	S.S 316	8
7.	PROTECTION PLUG	PLASTIC	2
8.	PLUG M50	BRASS	2
9.	SEALING O-RING	NBR	1
10.	MODEL LABEL	ALUMINIUM	1

**FIG 3. : TERMINAL POSITION**



**EXECUTION A-27T EXECUTION B-37T EXECUTION C-45T EXECUTION D-53T**

## GENERAL NOTES :

1. All dimensions except mountings are shown for reference only.
2. Mounting pad is shown for reference only.
3. Actual dimensions should be determined by the Customer.



## SUKRUT ELECTRIC CO. PVT. LTD.

Plot No. Pap-B-63, MIDC Chakan Industrial Area Phase - II, Village Bhamboli, Taluka Khed District Pune 410 501, Maharashtra, India.

Mobile : +91 75077 78841 / 75077 78842

Email : [marketing@sukrutelectric.com](mailto:marketing@sukrutelectric.com)

Web : [www.sukrutelectric.com](http://www.sukrutelectric.com)

