

## CT TERMINAL BOX

### MODELS : SM2-S

#### 1.0 GENERAL FEATURES :

- Die cast and aluminium body & cover. Therefore the assembly is rust proof, compact, lightweight and easy to handle.
- Very easy to install with 4 equispaced holes for fixing bolts.
- Combination of 4, 6, 9, 12 terminals are available using same enclosure.
- Replacement of any terminal is possible.
- For fixing cable gland of external circuit 4 exits of M25 are provided.
- The terminals allow the connection between wiring inside and outside the transformer tank and are designed in such way to avoid unscrew during assembly or wiring operation allow an easy connection between external and internal measuring circuit of transformer tank.
- Protection: Withstand IP-67. Suitable for outdoor application.
- Working Temperature: Standard -20 to 120 °C on request -40 to 120°C can be provided.

#### 2.0 APPLICATION :

SM2-S Terminal Box is very useful for connecting internal circuits with external circuits in oil filled transformer.

#### 3.0 CONSTRUCTION :

An aluminium Base is used for housing terminals. The Base has 4 plain holes of 18 mm diameter for mounting on Ø 180 PCD. An O-Ring is provided with suitable groove in the base to make the installation leak proof. Terminals are provided in combination of 4, 6, 9 & 12.

Each Terminal is provided with Cap to restrict the axial movement of Terminal. It is possible to replace any Terminal. Thus any housing can be used by just replacing faulty Terminal.

An Aluminium Cover is provided for the main Body. The Cover is provided with O-Ring for making it leak proof. A nylon lid links cover and housing to avoid any mistake during wiring operation.

#### 4.0 FAULTS & REMEDIES :

For any fault, other than replacement of Terminal, the Terminal Box should be returned to Sukrut Electric Co. Pvt. Ltd. for repairs.

#### 5.0 ROUTINE TEST :

- Leakage Test: At 2.5 kg/cm<sup>2</sup> for 1 min for body before assembly & At 2.5 kg/cm<sup>2</sup> for 1 min Terminal Box after assembly.
- Dielectric Test: At 10 kV for 1 minute between terminal to terminal and terminal and body.
- Visual Inspection: 100% visual inspection is done before and after assembly.



#### 6.0 TEST TYPE :

1. IP-67 test is carried out at IDEMI, Mumbai.
2. High voltage test at 10 KV for 1min is carried out at ARAI Pune.
3. Insulation test at 10 KV for 1min is carried out at IDEMI, Mumbai.
4. Oil compatibility test on moulded terminal M12 (PPS), with insulating oil (Transformer oil) of petroleum origin at ERDA, Pune.

#### 7.0 HOW TO ORDER :

Select suitable model acc. To No. of terminals & Exits. Eg: SM2-XS with 5 terminals.

No. of Terminals	No. of Exits
4	4
6	
9	
12	

**NOTE:** Standard No. of exits are 4. Special requirement can be fulfilled on demand.



# CT TERMINAL BOX

MODEL: SM2-S

FIG 1. : CT TERMINAL BOX: SM2-XS

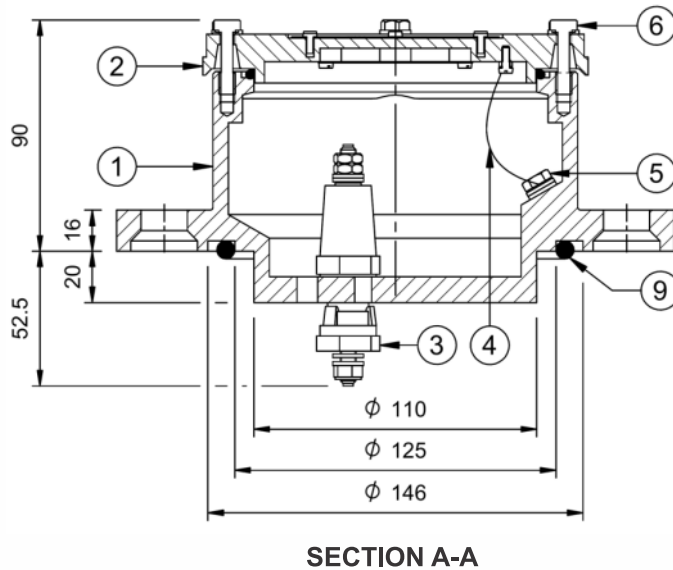
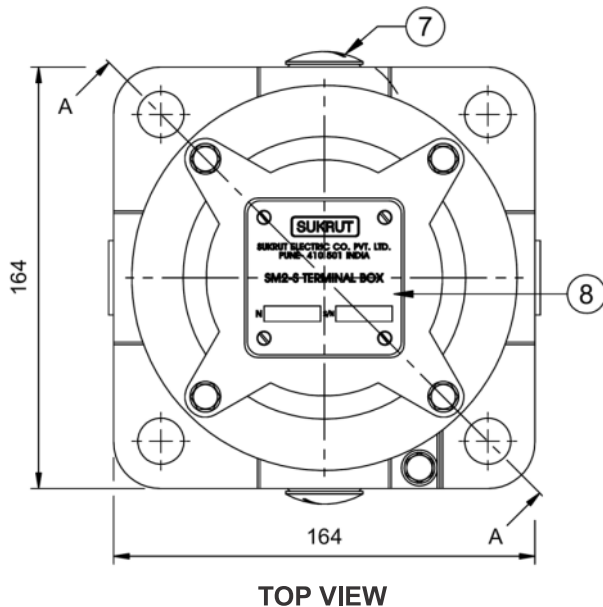
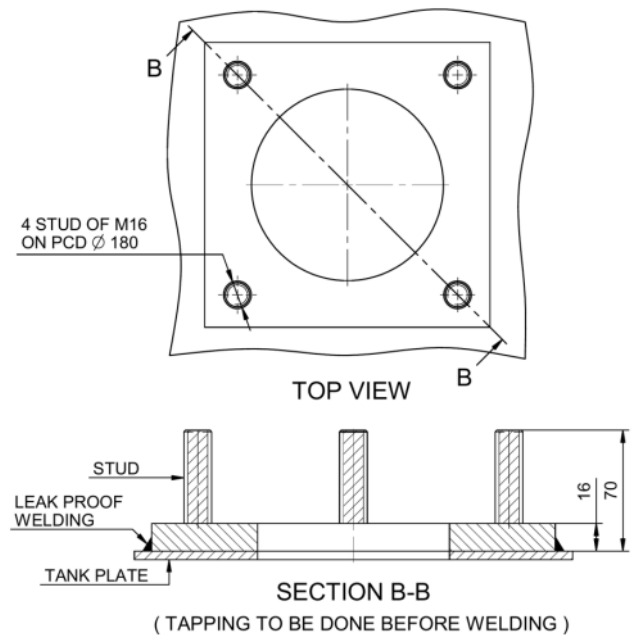


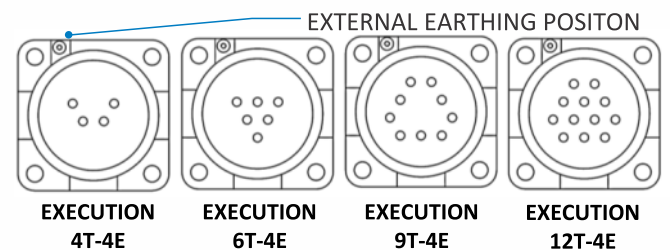
FIG 2. : MOUNTING PAD



PART LIST FOR FIG. 1

SR NO.	DESCRIPTION	MATERIAL	QTY
1.	BODY SM2-S	ALUMINIUM	1
2.	COVER SM2-S	ALUMINIUM	1
3.	M6 TERMINAL	-	3
4.	RETAINING DEVICE	-	1
5.	GROUND TERMINAL	S.S 316	2
6.	COVER ASSEMBLY SCREW	S.S 316	4
7.	PLUG M25	BRASS	2
8.	MODEL LABEL	ALUMINIUM	1
9.	SEALING O-RING	NBR	1

FIG 3. : TERMINAL POSITION



## GENERAL NOTES :

1. All dimensions except mountings are shown for reference only.
2. Mounting pad is shown for reference only.
3. Actual dimensions should be determined by the Customer.



## SUKRUT ELECTRIC CO. PVT. LTD.

Plot No. Pap-B-63, MIDC Chakan Industrial Area Phase - II, Village Bhamboli, Taluka Khed District Pune 410 501, Maharashtra, India.

Mobile : +91 75077 78841 / 75077 78842

Email : marketing@sukrutelectric.com

Web : www.sukrutelectric.com



We continuously review specifications and where appropriate, introduce modifications. We, therefore reserve the right to change specifications in this catalogue without prior notice.

